

COMMERCIAL REAL ESTATE SURVEY

2019 Spring/Summer



COMMERCIAL MARKETS DEVELOPER SENTIMENT

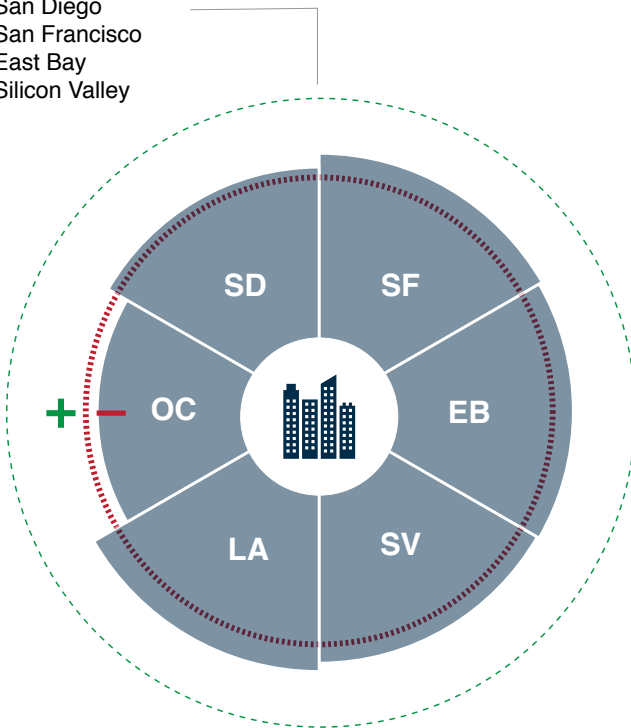
>50 INDICATES POSITIVE OUTLOOK

Arrow denotes change from last survey

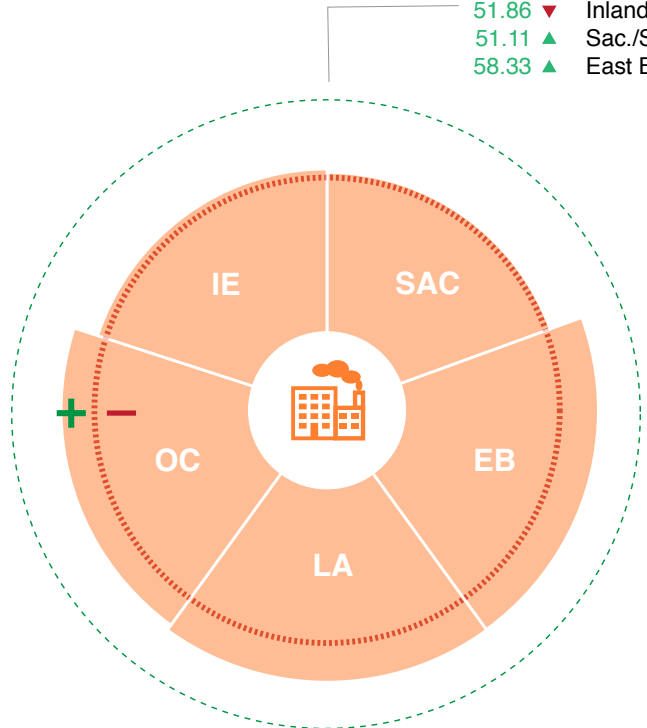
- 55.77 ▲ Los Angeles
- 47.53 ▲ Orange County
- 52.22 ▲ San Diego
- 55.18 ▲ San Francisco
- 54.43 ▲ East Bay
- 53.97 ▲ Silicon Valley

- 58.45 ▼ Los Angeles
- 57.16 ▲ Orange County
- 51.86 ▼ Inland Empire
- 51.11 ▲ Sac./San Joaquin
- 58.33 ▲ East Bay

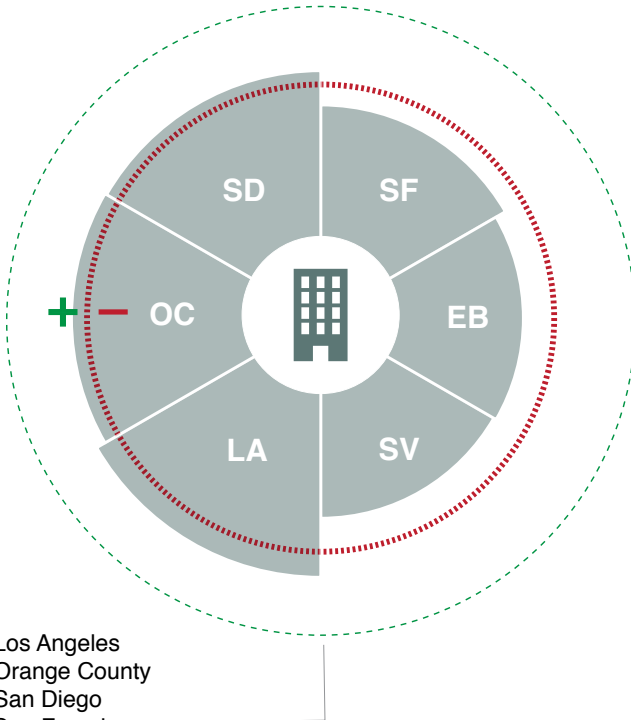
OFFICE



INDUSTRIAL



MULTI-FAMILY



RETAIL

